



# NOTICE of RACE



## **MORETON BAY BOAT CLUB** **Pearl Challenge** **2017**



# **Pearl Challenge 2017 continued**

## **1. INVITATION and EVENT DESCRIPTION**

### **1.1. Preamble**

The Moreton Bay Boat Club invites eligible boats to take part in the annual inter-club “PEARL CHALLENGE”.

The **Pearl Challenge** is aimed at sports and trailable boats able to safely complete an “out and back” 40 nautical mile course within the Moreton Bay ‘partially smooth’ (sheltered) waters.

It will also include a separate miscellaneous division for keelboats (mixed fleet) and multihull participants by way of additional divisions and prizes.

### **1.2. Features of the event**

The **Pearl Challenge** starts off the outer laterals marking the entrance to the Scarborough Harbour and, after a short diversion down the Redcliffe Peninsula foreshore follows a course across Moreton Bay to M8 and then via the East Knoll By-pass to M3. The course then follows the Pearl Channel to the South West Spit, then southward to the Brisbane Road buoy. The final legs are to Reef Point and the finish within Deception Bay to the north of the entrance to the Scarborough Boat Harbour.

### **1.3. Organization and support groups**

The Organizing Authority is the Moreton Bay Boat Club (MBBC).

Supporting organizations include the Australian Volunteer Coast Guard - Redcliffe.

### **1.4. Event schedule**

The event is scheduled for the weekend of 20<sup>th</sup> and 21<sup>st</sup> May 2017.

Maritime Safety Queensland requirements mandate all competitors be briefed on the Aquatic Event Authority requirements for competitors. That briefing will be held at the Moreton Bay Boat Club, Bird o’ Passage Parade Scarborough at 8:30am on Saturday 20<sup>th</sup> May 2017. At least one bone fide representative of each entered boat must attend that briefing.

Complementary berths and marina facilities will be available to all relevant participants from the preceding Friday (19/05/17) through to midday on the Sunday (21/05/17).

Berthing on the Friday night will be limited therefore prior arrangement via the MBBC is essential.

The start of the Pearl Challenge will be at 10:00 am on Saturday, 20<sup>th</sup> May 2017. The time limit for the event shall be 7:00 am on Sunday 21<sup>st</sup> May 2017.

A reasonable priced buffet breakfast on the MBBC boardwalk will be available from 7:30am on Sunday 21<sup>st</sup> May 2017.

# Pearl Challenge 2017 *continued*

## 1.5. Rules

The event will be governed by this Notice of Race, the Racing Rules of Sailing 2017-2020 (RRS), the Australian Sailing Special Regulations 2013-2016, the Sailing Instructions and Maritime Safety requirements prescribed within the associated Aquatic Event Authority.

The International Regulations for Preventing Collisions at Sea (ColRegs) displace and overrule the RRS absolutely between official sunset and official sunrise.

## 2. ELIGIBILITY and ENTRY

### 2.1. Statutory requirements and safety

#### Maritime Safety legislation

All participating boats must comply with the safety requirements mandated by the Transport Operations (Marine Safety) Regulation. Maritime Queensland resolves this down to a simple statement.

*All owners and operators, masters and crew members must ensure the ship is:*

- *safe*
- *properly equipped and crewed*
- *operated in a safe manner.*

#### Australian Sailing (AS) prescription

Boats entering the **Pearl Challenge** will be required to satisfy the requirements of Australian Sailing Special Regulations 2013-2016 for Category 5(N) events.

*NOTE :- All participating boats must be RRS Category 5N compliant. Confirmation of compliance must be via notification of a prior Category 5N race entered and the organizing Yachting Queensland affiliated club OR by forwarding a completed and signed AS approved checklist with the entry.*

### 2.2. Racing handicap divisions

The Pearl Challenge event comprises a trailable/sport boat monohull division, a mixed fleet keelboat division and a multihull division. All divisions will be restricted to Performance Handicap (PH) only.

If entries in the trailable/sports division exceed 20, the division will be divided into 2 sub-divisions with the split being the median handicap.

**NOTE :-** If the number of entries in the multihull division is less than 3, that division will be cancelled and any fees paid will be refunded. If the number of entries is 3 or 4, only a first place prize will be awarded.

Current handicap indices must be provided by each entrant by way of a copy of a current PH (or arbitrary) based race result issued by a Yachting Queensland affiliated club. The race committee reserves the right to adjust any submitted PH index on the grounds of reasonable equitability.

# Pearl Challenge 2017 *continued*

## 2.3. Entry lodgment and closing date

Race entry is via Top Yacht on-line registration via the Pearl Challenge link on the MBBC website at <http://mbbc.org.au/sporting/sailing/>.

## 2.4. Entry fee

The race entry fee is \$50.00 for each entry.

**Payment of entry fees must be via EFT to BSB 633 000 ACCT #. 130130065.** The account name is **Moreton Bay Boat Club** and the reference must be your name followed by **“P”** for Pearl. A copy of the transaction confirmation must be emailed to [sports@mbbc.org.au](mailto:sports@mbbc.org.au) concurrent with the entry.

## 3. MANAGEMENT

### 3.1. Sailing Instructions

Sailing instructions will be available from the MBBC web site at <http://mbbc.org.au/sporting/sailing/pearl-challenge/> from Wednesday 10<sup>th</sup> May 2017.

Amendments to the sailing instructions will be advised to entrants via email and will be posted on the MBBC web site

### 3.2. Course to be sailed

The course diagram is attached to this notice. The start of the event is to the north of the Scarborough Harbour entrance laterals. The initial legs of the course follow the Redcliffe Peninsula north and east foreshore. The course then crosses Moreton Bay to M8, M9 and M3 where it turns south down the Pearl Channel then to the Brisbane Road isolated danger mark. The final legs are to the Reef Point mark then to the finish at the start location. With the exception of brief intrusions into the shipping channels around M3, M8 and M9, the designated course lies to the west of the Moreton Bay entrance shipping channels. The presence of sandbanks adjacent the nominated course mandates the use of a current northern Moreton Bay navigation chart (e.g. MSQ chart MB1 MORETON BAY Manly to Mooloolaba).

### 3.3. Communication

All flag signals will be flown from the committee boat. There will be no signals ashore. The committee boat can be identified by an orange flag displayed while on station.

The official radio communication channels will be VHF77. Effective VHF communication is mandatory. This will be verified during “log on” and mandatory position (safety) transmissions.

Participants shall neither transmit nor receive event related information via radio or mobile phone communication not available to all participating boats.

Maritime Safety Queensland requires boats to monitor VHF12 while adjacent to or within shipping channels. These requirements will be included within the sailing instructions.

# **Pearl Challenge 2017 continued**

Incidents involving errant participating boats reported to Brisbane VTS by commercial shipping may result in disqualification.

Mandatory safety radio transmission requirements will be advised within the sailing instructions.

Shipping movements will be advised at the briefing on the event commencement day.

## **3.4. Finishing, Berthing and Trailer Parking**

After completing the event, entrants having pre-arranged complimentary berthing at the MBBC marina will have full use of the MBBC marina facilities.

The Scarborough Harbour entrance is defined by a yellow special mark and an associated port lateral mark. The entrance channel is defined by synchronized port and starboard lateral marks.

Deeper draft boats should keep to the centre of the entrance channel at the turn around the rock wall.

Boats entering the harbour must obtain berthing information via VHF 77.

Although the MBBC marina has significant visitor berthing space, boats taking advantage of the complimentary berths must be prepared to raft if necessary.

The MBBC Marina is a 'live aboard' marina and as such general noise abatement, environmental protection and social activity responsibilities are identical to those associated with a normal urban area. Although permanent marina occupants will be aware of the event and the expected increased activity, visiting marina occupants are requested to give due cognizance to the amenity and privacy of permanent occupants.

A substantial public car and trailer park is situated adjacent to the MBBC premises. This is served by a public boat ramp at the NE of the harbour. Trailable boats requiring a deeper water launch will be able to use either of the MBBC boat ramps within its secure area. However, due to member privilege, parking of visitor cars and trailers in this area is not permitted. Once visiting boats are launched or retrieved, cars and trailers must be returned to the public carpark.

A second public car and trailer park and associated public boat ramp are situated adjacent the Coast Guard premises accessible via Thurecht Pde.

The arrangements and rules governing berthing and parking at the MBBC will be further described and at the mandatory briefing.

## **3.5. Presentation and prizes**

The presentation venue will be the MBBC clubhouse, Bird o' Passage Pde. Scarborough commencing at 9:30 am on Sunday 22<sup>nd</sup> May 2017 (subject to any protest hearing).

Awarding of prizes is conditional upon participating boat representation at the presentation. Generally, prizes will be awarded to 1<sup>st</sup>, 2<sup>nd</sup> and 3<sup>rd</sup> in each division and for line honours.

# Pearl Challenge 2017 *continued*

A “navigator” prize will be awarded for the closest ETA to the finish advised by returning boats as they round the Brisbane Road isolated danger mark.

## 3.6. Disclaimer of liability

Competitors participate in the event entirely at their own risk (refer RRS 4 - Decision to Race). The organizing authority will not accept any liability for material damage, personal injury or death sustained in conjunction with, prior to, during, or after the event.

The boat’s decision to enter will be considered to be testament that :-

- the boat complies with the event entry eligibility requirements within this Notice of Race;
- the skipper and crew fully understand the meaning and intent of the RRS PART 1 – FUNDAMENTAL RULES;
- the skipper and crew have the necessary knowledge and skills to safely participate in and complete the event
- the participants indemnify the organizing authority, its agents and volunteers from any responsibility for any matter relating to the boat’s participation in the event.

This consideration is made in relation to the application of the Civil Liability Act 2003 to dangerous recreational activities.

## 3.7. Insurance

All boats participating in the event must be covered by a current third party insurance policy (with appropriate racing cover) with a minimum public liability of \$10,000,000. A copy of the certificate of currency (or an equivalent document) must be lodged via email concurrently with the entry.

## 3.8. Enquiries

Enquiries should be directed to one of the following Race Committee members:-

|               |                         |              |
|---------------|-------------------------|--------------|
| Darryl Wright | MBBC Sailing PRO        | 0408 936 962 |
| Geoff Eustace | MBBC Sailing Chairman   | 0412 976 398 |
| Eliza Harris  | MBBC Sports Coordinator | 07 3203 5188 |

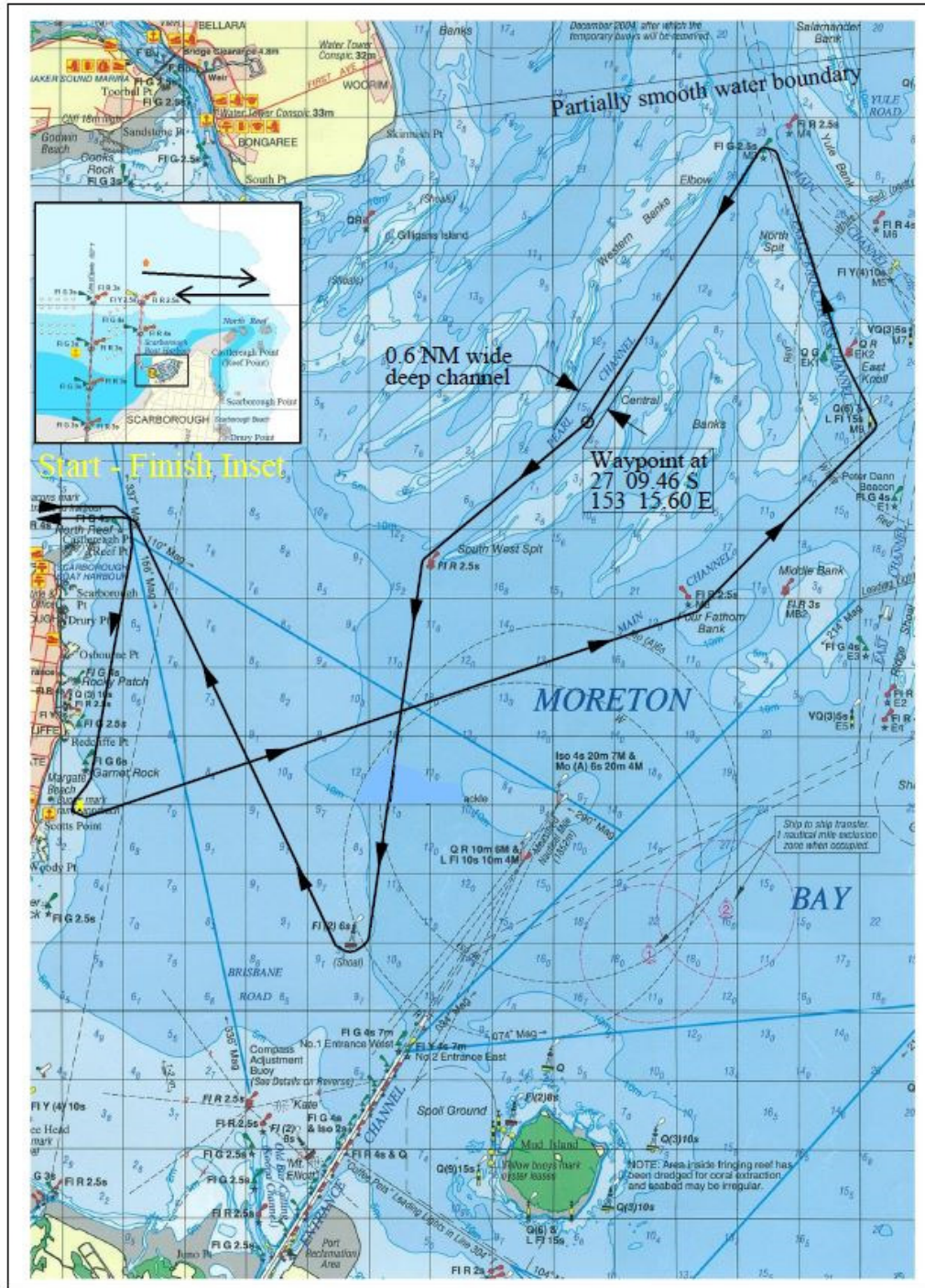
[sports@mbbc.org.au](mailto:sports@mbbc.org.au)



# Pearl Challenge 2017 continued

## 4. COURSE DIAGRAM

The course diagram is for general reference only and must not be used for navigation. Each participant must have a current MSQ recognized chart of the race area for navigation purposes.



Pearl Challenge Course Diagram