



# MBBC Lady Skipper Race 2017

## Notice of Race

### &

## Sailing instructions



### 1. Invitation

MBBC extends an invitation to owners and lady skippers of eligible yachts to compete in the 2017 LADY SKIPPER RACE and (circumstances permitting) Social BBQ. The event is scheduled to commence on Sunday 26<sup>th</sup> March 2017 at 10:00 am.

### 2. Rules

The races will be governed by the “general event rules” as published in the latest revision of the SAGS Sailing Manual (available on the MBBC web site) and this Notice of Race & Sailing Instructions.

Notwithstanding the SAGS staggered start, this event will incorporate a scratch start (refer section 6. Start).

**SPECIAL RULE PERTAINING TO THIS RACE.** - Each yacht must at all times be helmed by a lady skipper. Where only one female is aboard, a break of 5 minutes per hour may be taken.

### 3. Eligibility

To be eligible, yachts must:-

- a) comply with Queensland Transport safety requirements for the type and size of vessel sailing in ‘smooth waters’ as defined by MSQ;
- b) have at least one person on board who is a full member of the MBBC.
- c) be capable of safely completing the course, and
- d) have at least one female aboard for the duration of the event.

### 4. Entry

There is no entry fee for this event. Yachts entering shall “log on” to “race control” on VHF77 at least 15 minutes prior to the start. During “log on”, the name(s) of the nominated lady skipper(s) must be advised along with the number of people on board. [NOTE:-It is requested that yachts intending to race but have not held a MBBC handicap for 2 years notify the club handicapper or secretary a few days prior so that a new handicap can be assigned ].

### 5. Spinnakers and extras

Spinnakers and extras are allowed in this event. Any boat not intending to use spinnakers or extras must notify “race control” during “log on”.

### 6. Start

The race will be a scratch start with the yachts “self starting” at or after 10:00 am GPS AEST. No start boat will be on station and no warning or preparatory signals will be made.

The start line will be between the yellow special mark at the entrance to Scarborough Harbour and a yellow buoy laid some distance to its north.



# MBBC Lady Skipper Race 2017



Any boat detected motoring within 5 minutes prior to the start signal will be given a penalty of a type and extent as deemed appropriate by the race committee.

## 7. Course

The course to be sailed will be one of the four MBBCSS standard courses appended to this notice. These are labelled D3, E3, H2 and K2.

The selected course will be advised to participants during 'log on'.

## 8. Shortening of course

If the course is shortened, the revised course will be advised via VHF77.

## 9. Finish

The finish will be an imaginary line being the yellow special mark at the Scarborough Harbour entrance in transit with the green lateral to its south (courses E3, H2 and K2) or the red lateral to its east (course D3). The yellow special mark will be the port end of the line. The starboard end of the line will be an imaginary point 100m to the north (courses E3, H2 and K2) or west (course D3) of the yellow special mark. If still in place, the yellow start buoy is not part of the finish line.

Yachts are to record their own (GPS/AEST) finish times and advise that time to "race control" via VHF 77 immediately after finishing.

## 10. Other Safety Requirements

All yachts MUST MAINTAIN EFFECTIVE RADIO WATCH on VHF77 at all times from "log on" until advising a finish time.

## 11. Handicaps

Handicaps will be assigned to yachts based on previously published spinnaker and non-spinnaker handicaps and in accordance with the guidelines detailed in the MBBC HANDBOOK. Notwithstanding, arbitrary handicaps may be assigned to any yacht based on its normal performance. The handicappers' decision will be final.

## 12. Sailing instructions

The complete sailing instructions are within this combined Notice of Race & Sailing Instructions.

## 13. Insurance

It is a condition of entry that each boat must be covered by third party property and public liability insurance with a minimum cover of \$10,000,000.

## 14. Presentation and prizes

Announcement of results will take place during a BBQ at the MBBC clubhouse after the event. Results will be re-announced and prizes presented at the MBBC Sailing Section annual function.

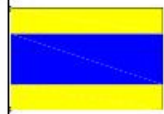
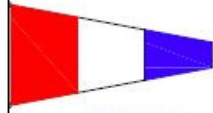
Novelty prizes will be at the discretion of the race committee. It is suggested skippers should pay particular attention to presentation of the crew, conduct of the race and overall courtesy on the water. Such attention could be rewarding.



# MBBC Lady Skipper Race 2017



## 15. Standard courses for the event





**D**

**3**

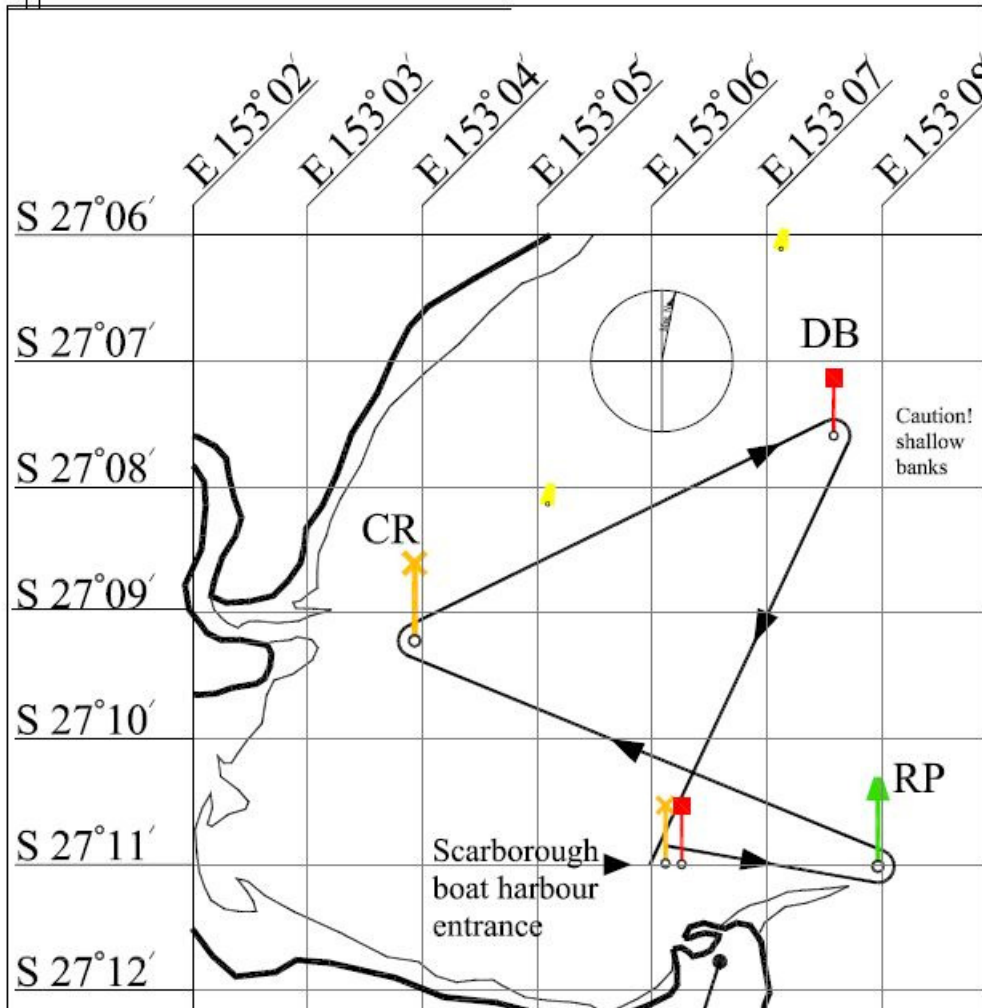
**NOTE!**  
This course diagram is approximate and must not be used for navigation.

Course to be sailed		
START	Distances (NM)	
RP to starboard	1.6	1.6
CR to starboard	4.0	5.6
DB to starboard	3.7	9.3
FINISH	3.6	12.9



**NE**  
wind

**Grid & marks**  
Course to be sailed prevails over diagram  
Grid lines are close approximations.  
Centre of base circle is the mark location.





# MBBC Lady Skipper Race 2017



**E**

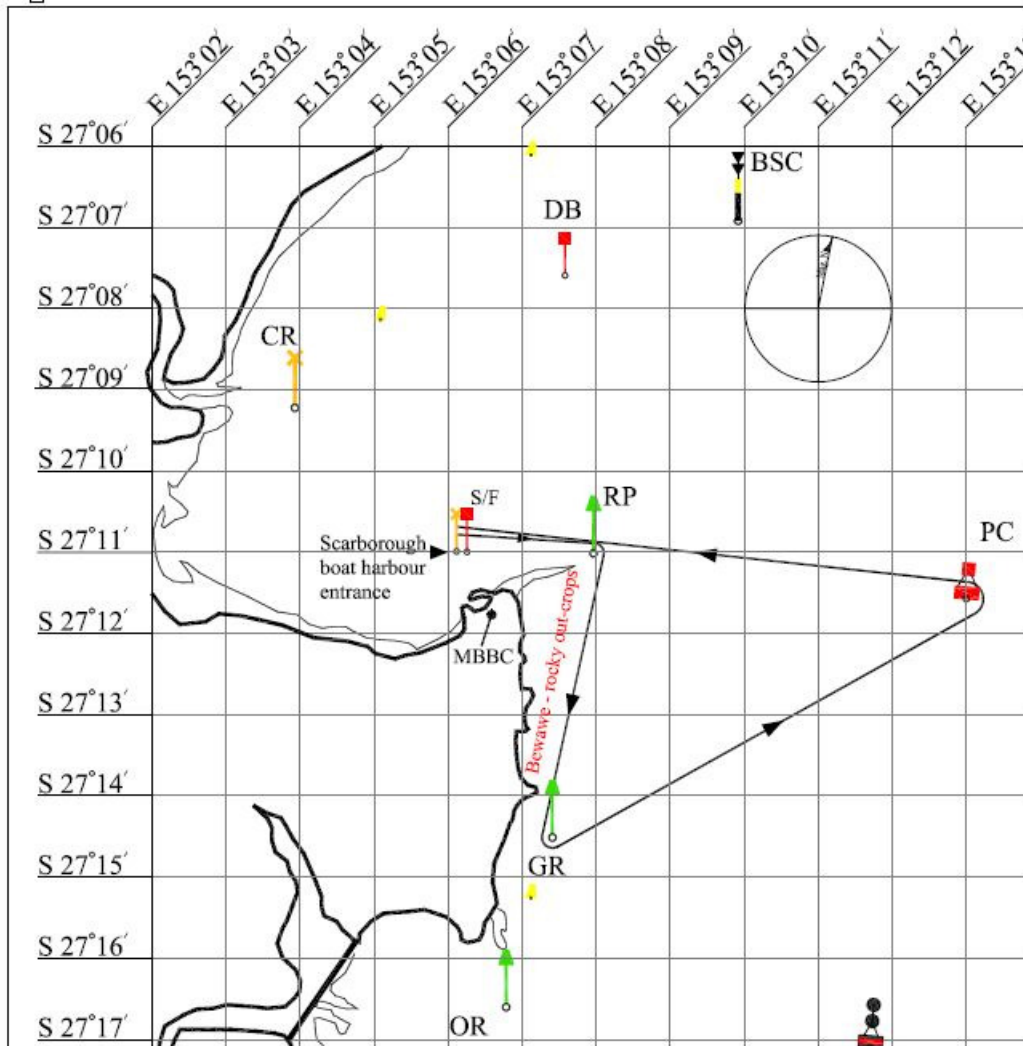
**3**

**NOTE!**  
This course diagram is approximate and must not be used for navigation.

Course to be sailed		
START	Distances (NM)	
RP to starboard	1.6	1.6
GR to port	3.5	5.1
PC to port	5.8	10.9
RP to port	4.5	15.4
FINISH	1.6	17.0

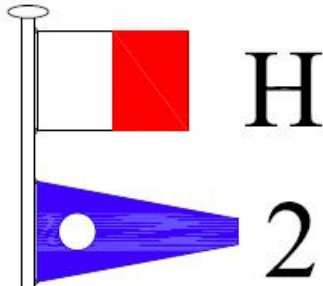
**NE**  
wind

**Grid & marks**  
 Course to be sailed prevails over diagram  
 Grid lines are close approximations.  
 Centre of base circle is the mark location.





# MBBC Lady Skipper Race 2017



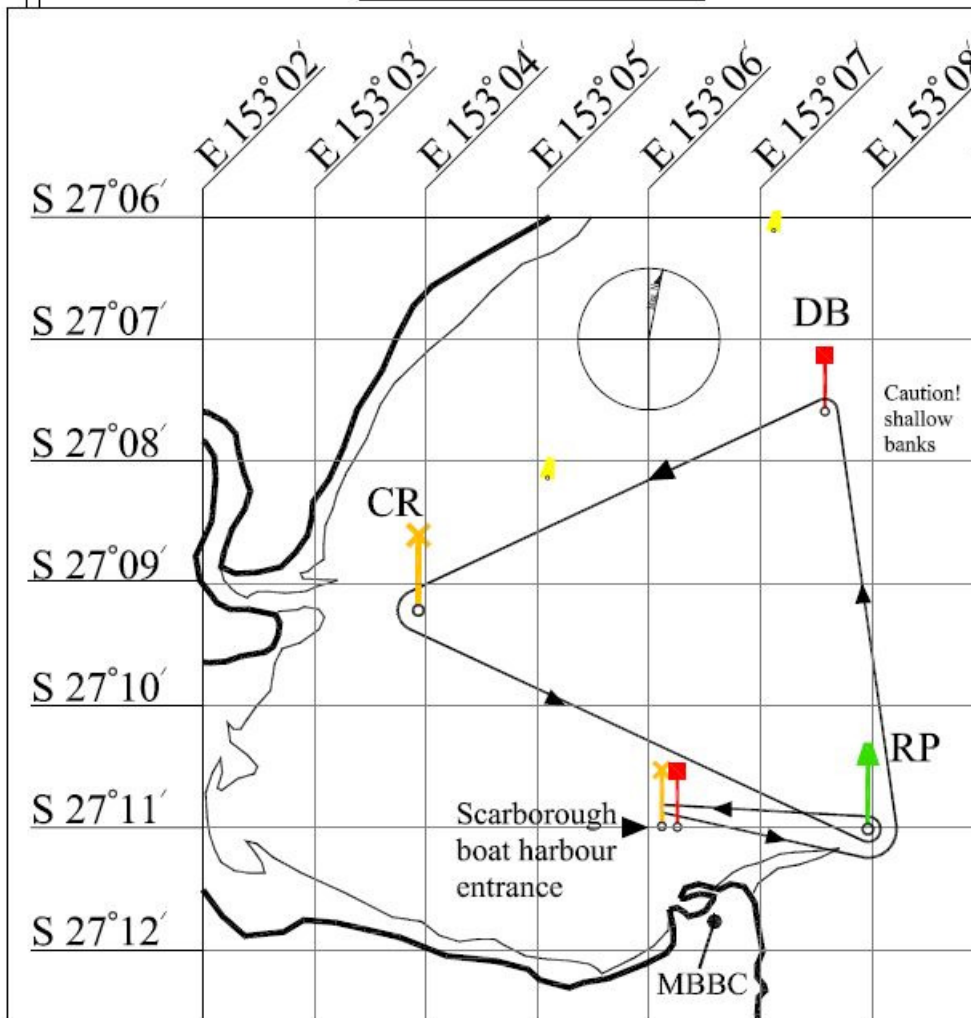
Course to be sailed		
START	Distances (NM)	
RP to port	1.6	1.6
DB to port	3.4	5.0
CR to port	3.7	8.7
RP to port	4.0	12.7
FINISH	1.6	14.3



**SE**  
wind

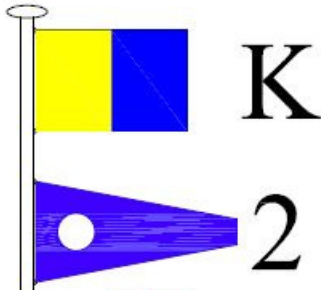
**NOTE!**  
This course diagram is approximate  
and must not be used for navigation.

**Grid & marks**  
 Course to be sailed prevails over diagram  
 Grid lines are close approximations.  
 Centre of base circle is the mark location.





# MBBC Lady Skipper Race 2017



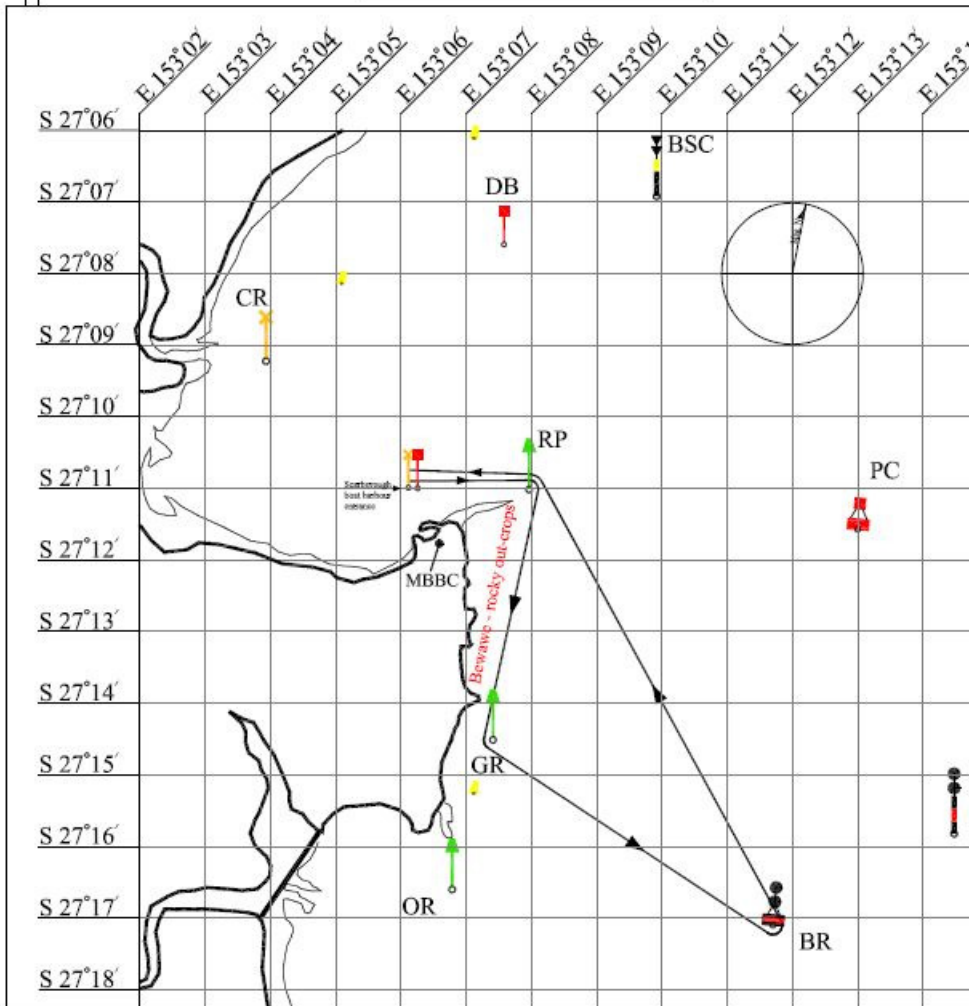
Course to be sailed		
START	Distances (NM)	
RP to starboard	1.0	1.6
GR to port	3.5	5.1
BR to port	4.6	9.7
RP to port	6.9	16.6
FINISH	1.6	18.2



# SE wind

**NOTE!**  
This course diagram is approximate  
and must not be used for navigation.

**Grid & marks**  
Course to be sailed prevails over diagram  
Grid lines are close approximations.  
Centre of base circle is the mark location.



oooOOOooo