



NOTICE of RACE

MORETON BAY BOAT CLUB

FAIRWAY CHALLENGE 2018



The Fairway Challenge



1. INVITATION and EVENT DESCRIPTION

1.1. Invitation

The Moreton Bay Boat Club invites eligible sailing boats to take part in its annual inter-club “FAIRWAY CHALLENGE”

The Fairway Challenge is aimed at ocean capable sailing boats able to safely complete an “out and back” 80 nautical mile course from the Redcliffe Peninsula to the Moreton Bay entrance NW Fairway mark to the east of Caloundra.

The Fairway Challenge will cater for multihull participants by way of a separate division.

1.2. Venue and features

The **Fairway Challenge** race area is northern Moreton Bay and its NW entrance. The event starts off the Redcliffe Peninsula foreshore and, after an embedded triangular short course adjacent the foreshore, follows a course generally adjacent the shipping channels to the NW Fairway mark off Caloundra. The return course is a reverse of the outgoing course with the finish within Deception Bay to the north of the entrance to the Scarborough Boat Harbour.

The event offers significant public exposure due to the close proximity of the start and triangular short course to the Redcliffe Peninsula foreshore.

The event offers complimentary berthing of finished boats at the Moreton Bay Boat Club Marina.

Refreshments will be made available to finishing boats entering the Scarborough Harbour.

1.3. Organization and support groups

The Organizing Authority is the Moreton Bay Boat Club (MBBC).

Supporting organizations include the Australian Volunteer Coast Guard - Redcliffe.



FAIRWAY CHALLENGE-2018

1.4. Event schedule

The event is scheduled for the weekend of 17th and 18th February 2018 so as to contribute as a Moreton Bay exit practice event for the 2018 QCYC Brisbane to Gladstone event.

Maritime Safety Queensland requirements mandate a briefing for all competitors. That briefing will be held at the Moreton Bay Boat Club, Bird o' Passage Parade, Scarborough on Thursday 15th February 2018 commencing at 7:30 pm. At least one bone fide representative of each entered boat must attend that briefing.

Complementary berths and marina facilities will be available to all relevant participants from the preceding Friday (16/02/18) through to midday on the Sunday (18/02/18). Berthing on the Friday night will be limited therefore prior arrangement via the MBBC is essential.

The start of the Fairway Challenge will be at 11:00 am on Saturday 17th February 2018. The conditional time limit for the event shall be 7:00 am on Sunday 18th February 2018.

A reasonable priced buffet breakfast on the MBBC boardwalk will be available to the crews of all participating boats from 7:30 am on the Sunday.

Placing announcements and presentation of prizes will commence at 9:30 am Sunday 18th February 2018 (subject to any protest hearing). Shore activities are scheduled to conclude prior to 12 noon.

1.5. Rules

The event will be governed by this Notice of Race, the Racing Rules of Sailing 2017-2020 (RRS), the Australian Sailing Special Regulations 2017-2020, the Sailing Instructions and Maritime Safety requirements prescribed within the associated Aquatic Event Authority. All relevant information and references will be included within the sailing instructions.

2. ELIGIBILITY and ENTRY

2.1. Statutory requirements and safety

Maritime Safety prescriptions

All participating boats must comply with the safety requirements mandated by the Transport Operations (Marine Safety) Regulation. Maritime Safety Queensland resolves this down to a simple statement.

All owners and operators, masters and crew members must ensure the ship is:

- *safe*
- *properly equipped and crewed*
- *operated in a safe manner.*

FAIRWAY CHALLENGE-2018

Australian Sailing prescriptions

Boats entering the Fairway Challenge will be required to satisfy the requirements of Australian Sailing Special Regulations 2017-2020 for Category 3 events.

NOTE :- All race entrants must be RRS Category 3 compliant. Confirmation of compliance must be via notification of a prior Category 3 (or better) race entered and the organizing Australian Sailing affiliated club OR by forwarding a completed and signed Australian Sailing equipment audit form with the entry.

2.2. Racing handicap divisions

The mandatory monohull race handicap division will be based on Performance Handicap (PH). Entrants may also elect to enter the additional IRC division (refer Note 1).

A separate multihull division will be included subject to the registered entry numbers (refer Note 2)

NOTE 1:- If the number of entries in the IRC division is less than 5, that division will be cancelled and entrants affected will race only in the PH division. The additional entry fee(s) will be refunded.

NOTE 2:- If the number of entries in the multihull division is less than 3, that division will be cancelled and any fees paid will be refunded. If the number of entries is 3 or 4, only a first place prize will be awarded.

Current handicap indices must be provided by each entrant by way of a copy of a current PH (or arbitrary) based race result issued by an Australian Sailing affiliated club (and a copy of a current IRC certificate if the IRC division is entered). The race committee reserves the right to adjust any submitted PH index on the grounds of reasonable equitability.

2.3. Entry lodgment and closing date

Race entry is via Top Yacht on-line registration via the Fairway Challenge page on the MBBC website at

<http://mbbc.org.au/sporting/sailing/fairway-challenge/>

2.4. Entry fees

The race entry fees are:-

- monohull PH division \$65 (mandatory for all monohulls)
- IRC division \$25 (in addition to the PH division fee)
- multi-hull PH division \$65

The preferred payment method is via EFT to BSB 633 000 ACCT # 1301 300 65. The reference: must be the entrant's surname followed by **F** for Fairway. A copy of the transaction confirmation must be submitted concurrent with the entry.

3. MANAGEMENT

3.1. Sailing Instructions

Sailing instructions will be available from the MBBC web site at www.mbbc.org.au from Monday 29th January 2018.

Amendments to the sailing instructions will be advised to entrants via email and will be posted on the MBBC web site

3.2. Course to be sailed

The start, finish and course diagrams are attached to this notice. The start of the event is to the east of the Redcliffe jetty. The initial triangular short course is around set marks to the south and east of the start with the final mark of the short course being a set mark at the approximate location of the Brisbane to Gladstone yacht race Redcliffe turn. The finish is within Deception Bay at the red lateral mark marking the entrance to the Scarborough Boat Harbour. With the exception of brief intrusions into the shipping channels around M8, M3, NW12, NW1 and NW4, the designated course lies to the west of the primary Moreton Bay entrance shipping channels. The presence of sandbanks adjacent the nominated courses mandates the use of a current northern Moreton Bay and shipping entrance navigation chart (e.g. MSQ chart MB1 MORETON BAY Manly to Mooloolaba).

Note: If the weather is such that the anchoring of support boats off the Redcliffe Peninsula foreshore is untenable, the start will be moved to the alternate location within Deception Bay and the foreshore short course will be deleted. Refer to **4.1 Fairway Challenge Start and Finish diagram**.

3.3. Penalty system

RRS 44.1 is changed so that the Two-Turns Penalty is replaced by the One-Turn Penalty.

Where a boat has not taken a One-Turn Penalty for a breach, the race committee may apply a time penalty.

3.4. Support boats

Support boats will be identified by orange flags being flown.

3.5. Communication

All flag signals will be flown from the start boat. There will be no signals ashore. The committee boat can be identified by an orange flag displayed while on station.

The official radio communication channels will be VHF77 (primary channel) and VHF21 (secondary channel). Effective VHF communication is mandatory. This will be verified during “log on” and mandatory position (safety) transmissions.

The MBBC Fairway Challenge shore station call sign is “VKQ445” or “RACE CONTROL”.

Maritime Safety Queensland requires boats to monitor VHF12 while adjacent to or within shipping channels. These requirements will be included within the sailing instructions.

FAIRWAY CHALLENGE-2018

Incidents involving errant participating boats reported to Brisbane VTS by commercial shipping may result in disqualification at the discretion of the race committee.

Mandatory safety radio transmission requirements will be advised within the sailing instructions.

Relevant shipping movements will be advised at the briefing and on the day.

3.6. Finishing, Berthing and Trailer Parking

After completing the event, entrants having pre-arranged complimentary berthing at the MBBC marina will have full use of the marina facilities. All boats entering the Scarborough Harbour for berthing after the event will receive complimentary beverage refreshment.

The Scarborough Harbour entrance is defined by a lit yellow special mark and an associated lit port lateral mark. The entrance channel is defined by synchronized lit port and starboard lateral marks.

Deeper draft boats should keep to the centre of the entrance channel at the turn around the rock wall.

The harbour entrance least depth occurs within the west channel of the harbour between the rock wall and the Scarborough Marina (soon after the rock wall entrance). The following table gives approximate least depth data related to Brisbane Bar tides.

Tide Data and Scarborough Harbour Entrance Least Depth								
Friday 16 th February 2018			Saturday 17 th February 2018			Sunday 18 th February 2018		
Time	Tide at Brisbane Bar	Harbour Entrance Least depth	Time	Tide at Brisbane Bar	Harbour Entrance Least depth	Time	Tide at Brisbane Bar	Harbour Entrance Least depth
0341	0.39	2.36	0418	0.39	2.36	0454	0.41	2.38
1004	2.43	4.40	1037	2.43	4.40	1109	2.4	4.37
1636	0.52	2.49	1708	0.50	2.47	1741	0.50	2.47
2211	2.03	4.00	2248	2.07	4.04	2326	2.09	4.06

Boats entering the harbour will be met by a guide boat or guide personnel on the marina extremities to advise berthing locations and facilities information. Although the MBBC marina has significant visitor berthing space, boats taking advantage of the complimentary berths must be prepared to raft if necessary.

The MBBC Marina is a 'live aboard' marina and as such general noise abatement, environmental protection and social activity responsibilities are identical to those associated within a normal urban area. Although permanent marina occupants will be aware of the event and the expected increased activity, visiting marina occupants are requested to give due cognizance to the amenity and privacy of permanent occupants.

FAIRWAY CHALLENGE-2018

3.7. Presentation and prizes

The presentation venue will be the MBBC clubhouse, Bird o' Passage Pde. Scarborough. The presentation will commence at 9:30 am on Sunday 18th February 2018 (subject to any protest hearing).

Awarding of prizes is conditional upon participating boat representation at the presentation. Generally, prizes will be awarded to 1st, 2nd and 3rd in each division and for line honours (subject to 2.2 - Racing handicap divisions).

A prize will be awarded to the 1st boat (on PH) to the 3rd mark (the embedded short course) and for the closest ETA to the finish advised as returning boats pass M8.

3.8. Disclaimer of liability

Competitors participate in the event entirely at their own risk (refer RRS 4 - Decision to Race). The organizing authority will not accept any liability for material damage, personal injury or death sustained in conjunction with, prior to, during, or after the event.

The boat's decision to enter will be considered to be testament that:-

- the boat complies with the event entry eligibility requirements within this Notice of Race;
- the skipper and crew fully understand the meaning and intent of the RRS PART 1 – FUNDAMENTAL RULES;
- the skipper and crew have the necessary knowledge and skills to safely participate in and complete the event
- the participants indemnify the organizing authority, its agents and volunteers from any responsibility for any matter relating to the boat's participation in the event.

This consideration is made in relation to the application of the Civil Liability Act 2003 to dangerous recreational activities.

3.9. Insurance

All boats participating in the event must be covered by a current third party insurance policy (with appropriate racing cover) with a minimum public liability of \$10,000,000. A copy of the certificate of currency (or an equivalent document) must be lodged with the entry.

3.10. Enquiries

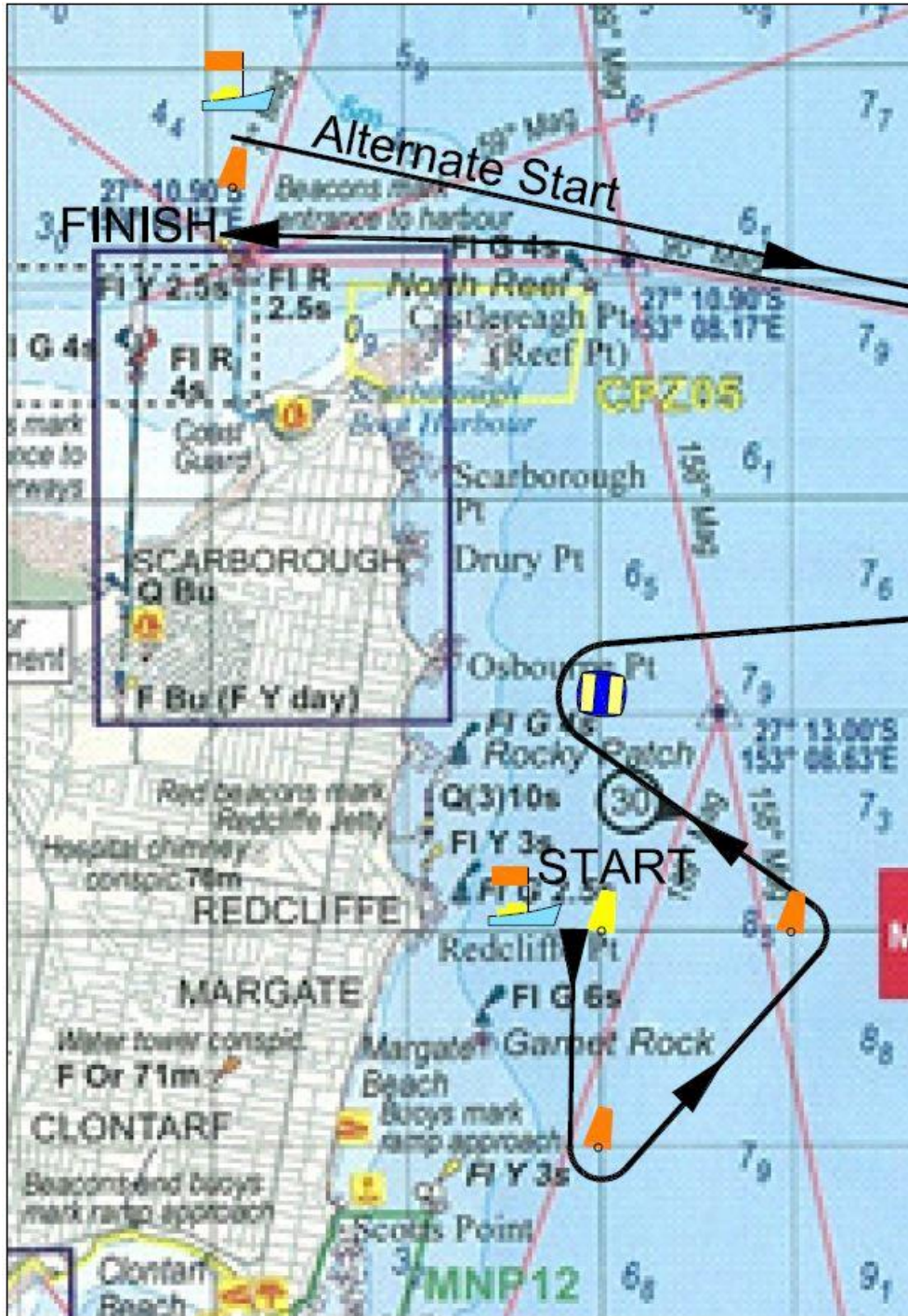
Enquiries should be directed to one of the following race committee members:-

David Mason-Cox	MBBC Secretary	0419 711 488	
Darryl Wright	PRO	0408 936 962	
Kelly Wilson	MBBC Sports Coordinator	3203 5188	sports@mbbc.org.au

4. COURSE DIAGRAMS

The course diagrams are for general reference only and must not be used for navigation. Each participant must have a current MSQ recognized chart covering the race area for navigation purposes. Chart plotters or the like are not substitutes for official navigation charts/maps.

4.1. Fairway Challenge Start and Finish diagram



4.2. Fairway Challenge Course Diagram

